

**Major Highlights
of
NEPAL
FOREIGN TRADE STATISTICS
2071/72**

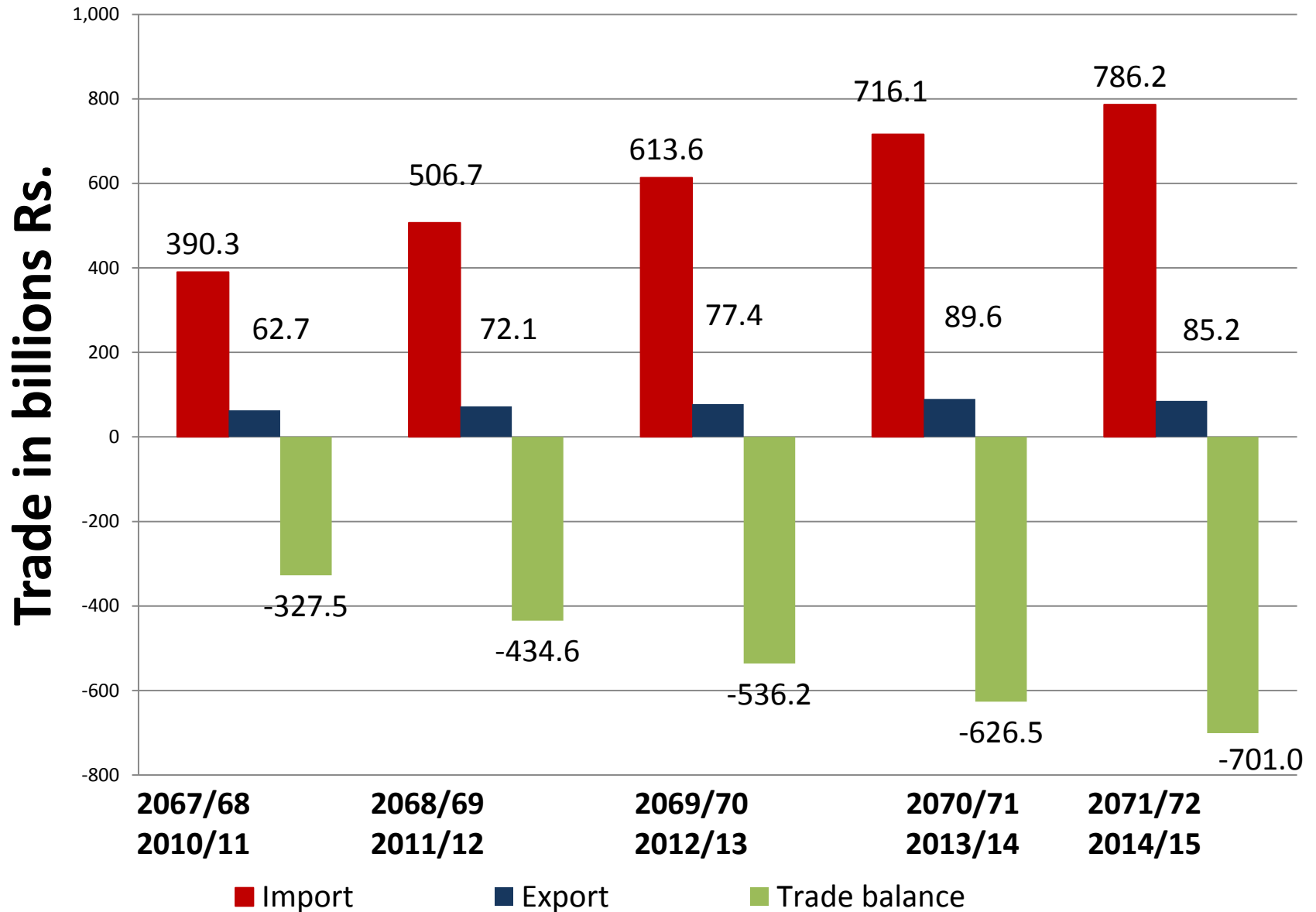
**Statistics Analysis Section
Department of Customs
Nepal
20 Aug. 2015**

Nepal : Merchandise Trade Direction

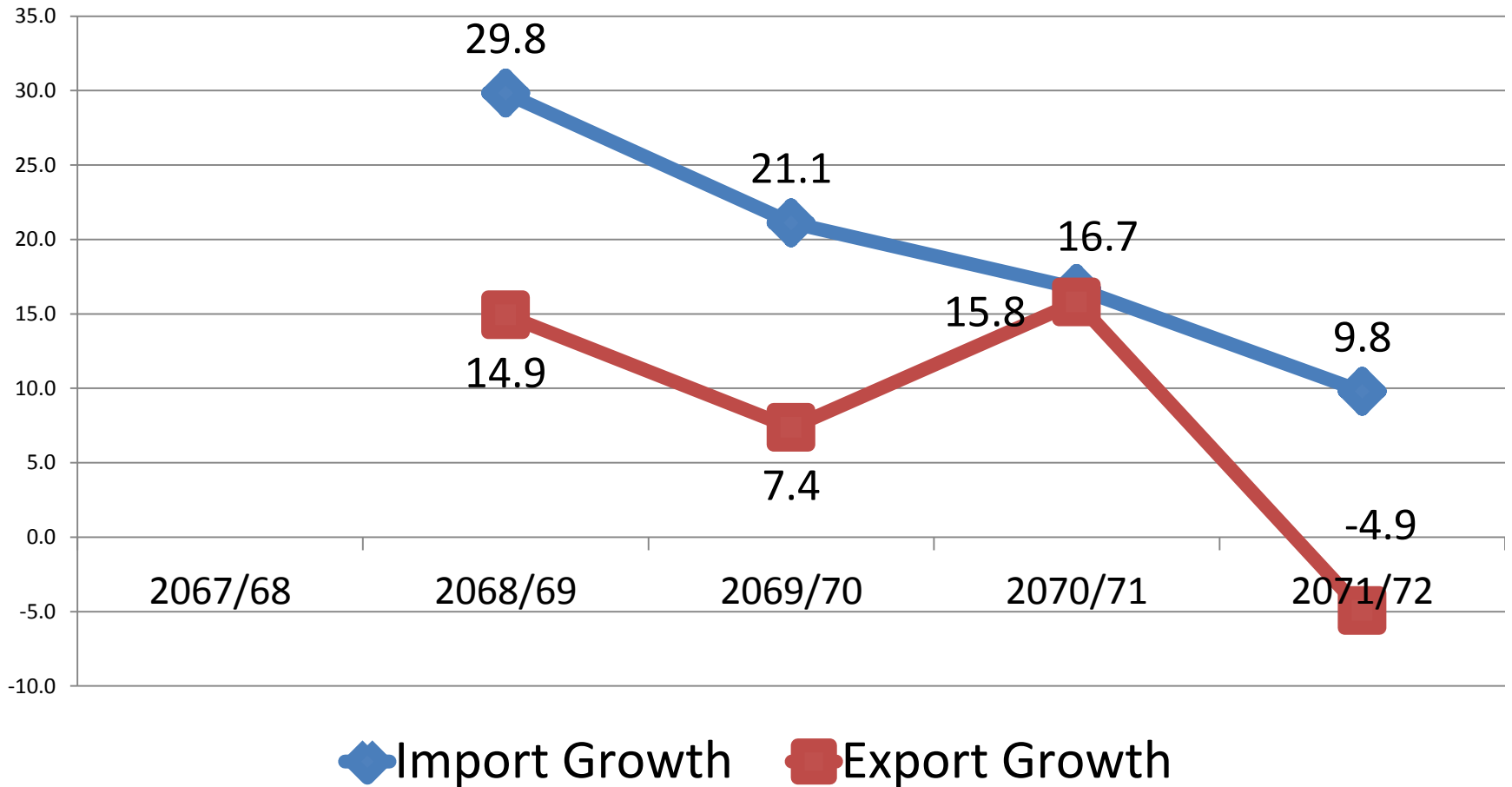
in Billions Rs.

Fiscal Year	Import	Export	Trade Balance
2067/68	390.3	62.7	-327.5
2068/69	506.7	72.1	-434.6
2069/70	613.6	77.4	-536.2
2070/71	716.1	89.6	-626.5
2071/72	786.2	85.2	-701.0

Nepal : Merchandise Trade Direction

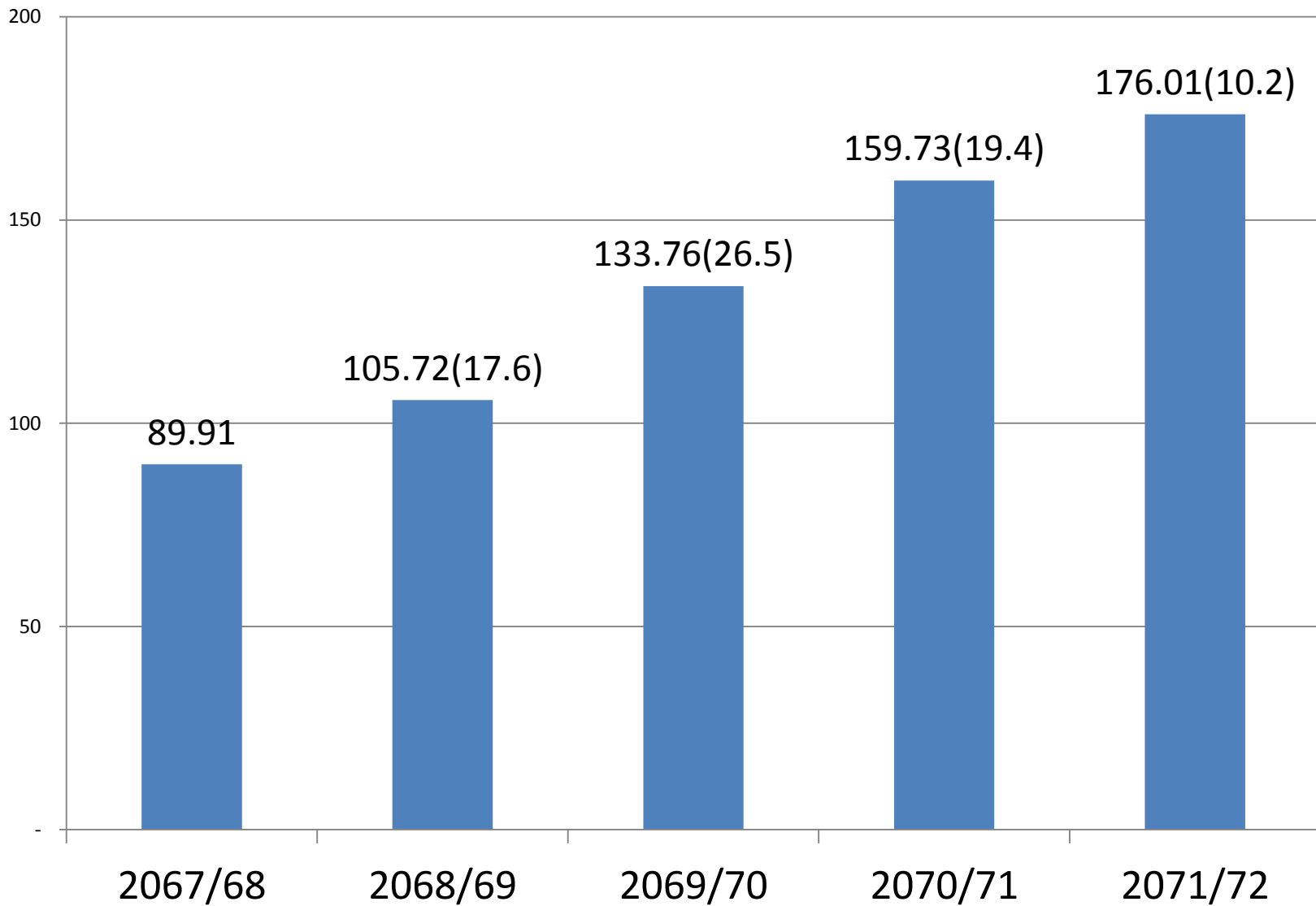


Nepal : Imports and Exports Growth



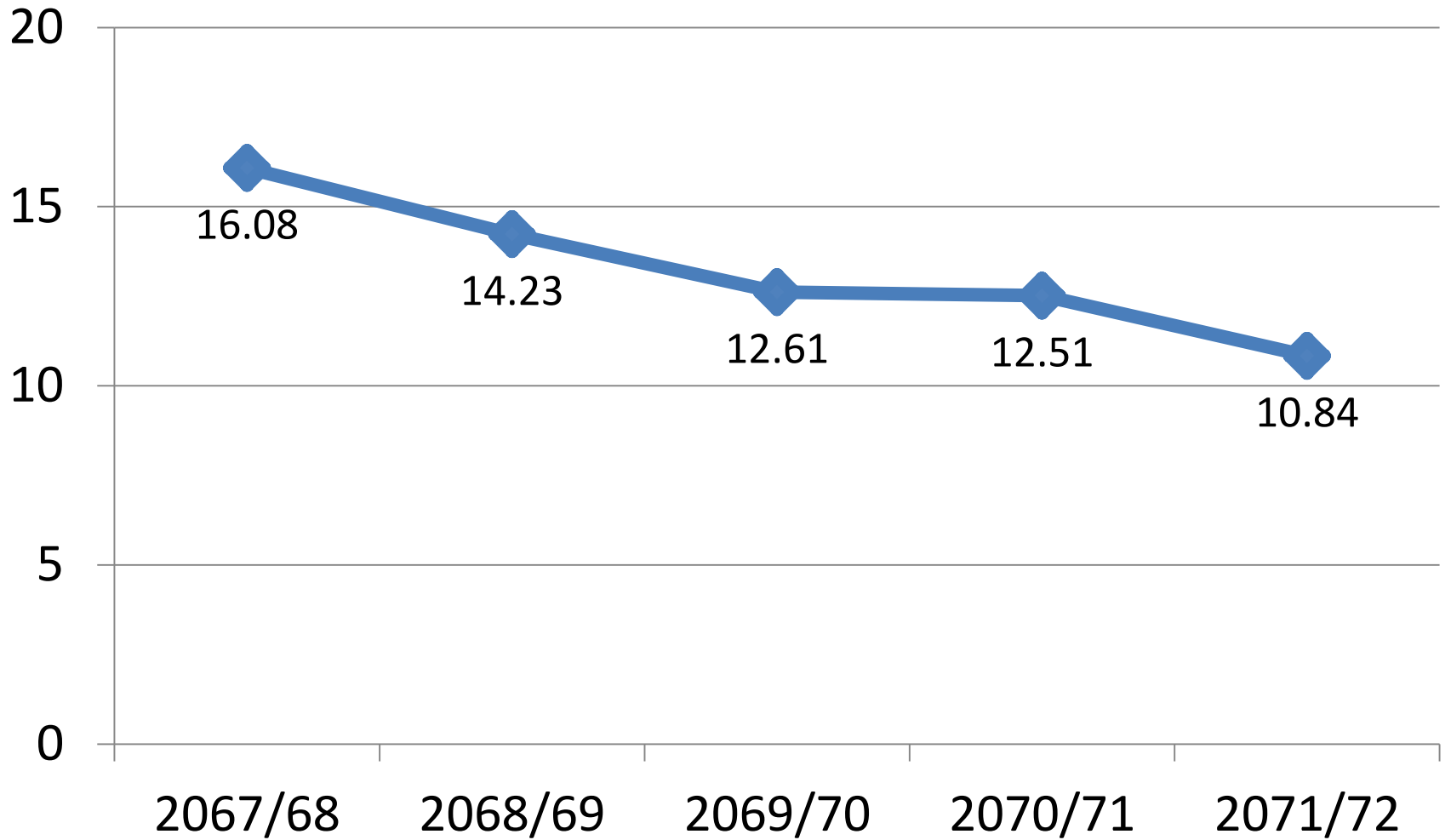
Customs Revenue Collection

in Billions Rs.

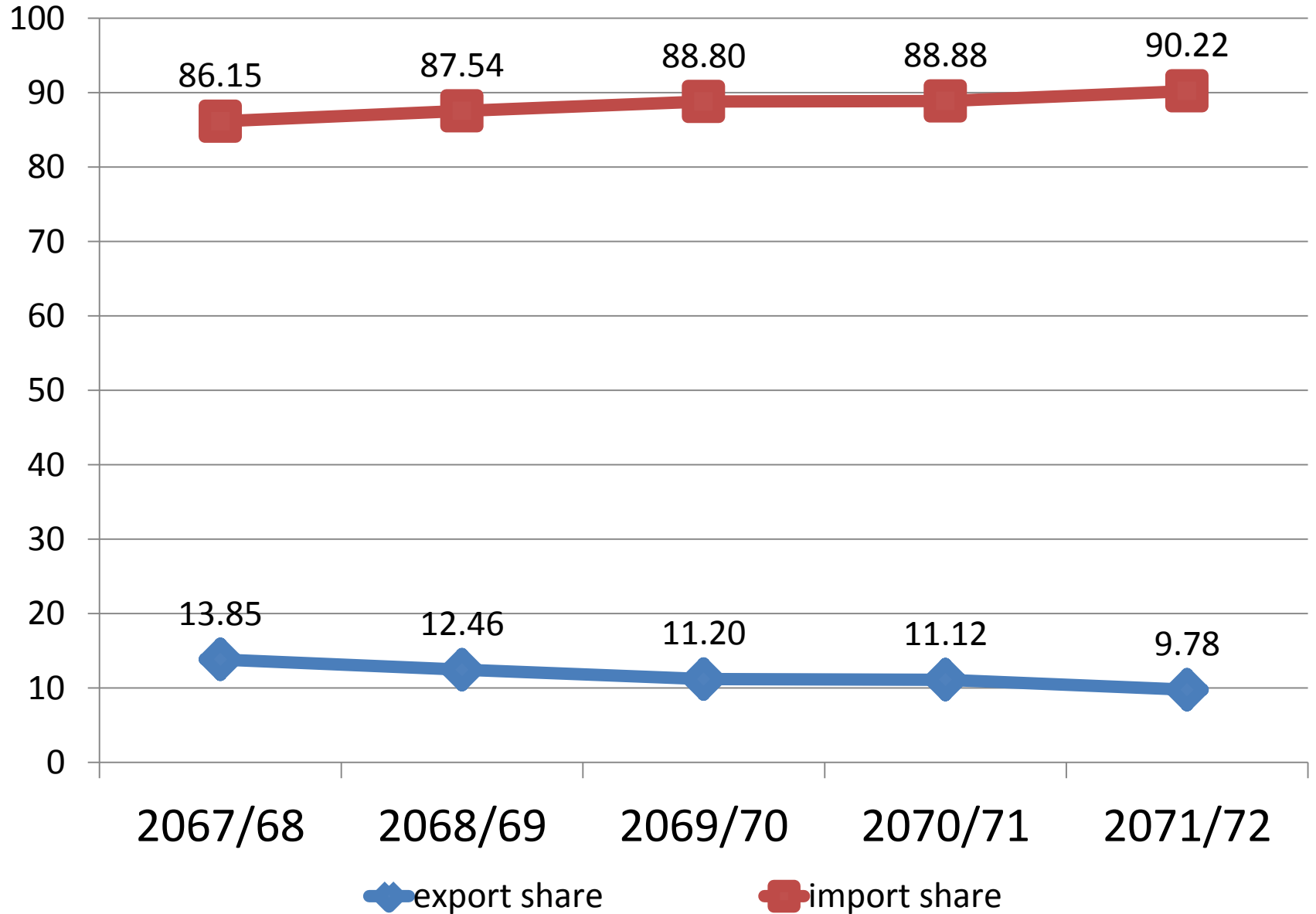


Figures in the parenthesis represent nominal growths.

Exports as % of imports

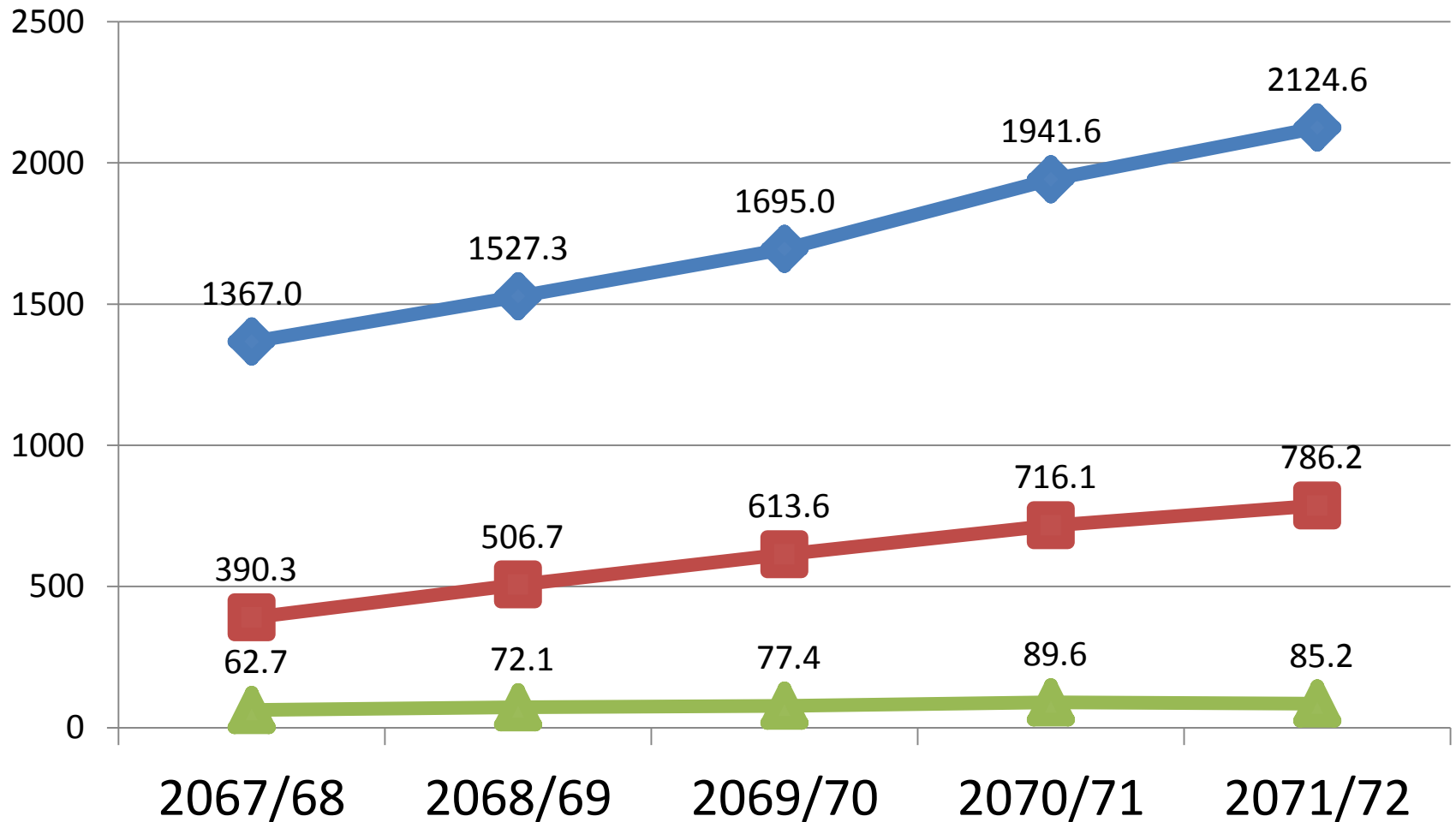


imports and exports share to total trade



Nominal GDP, Exports and Imports

in Billions Rs.

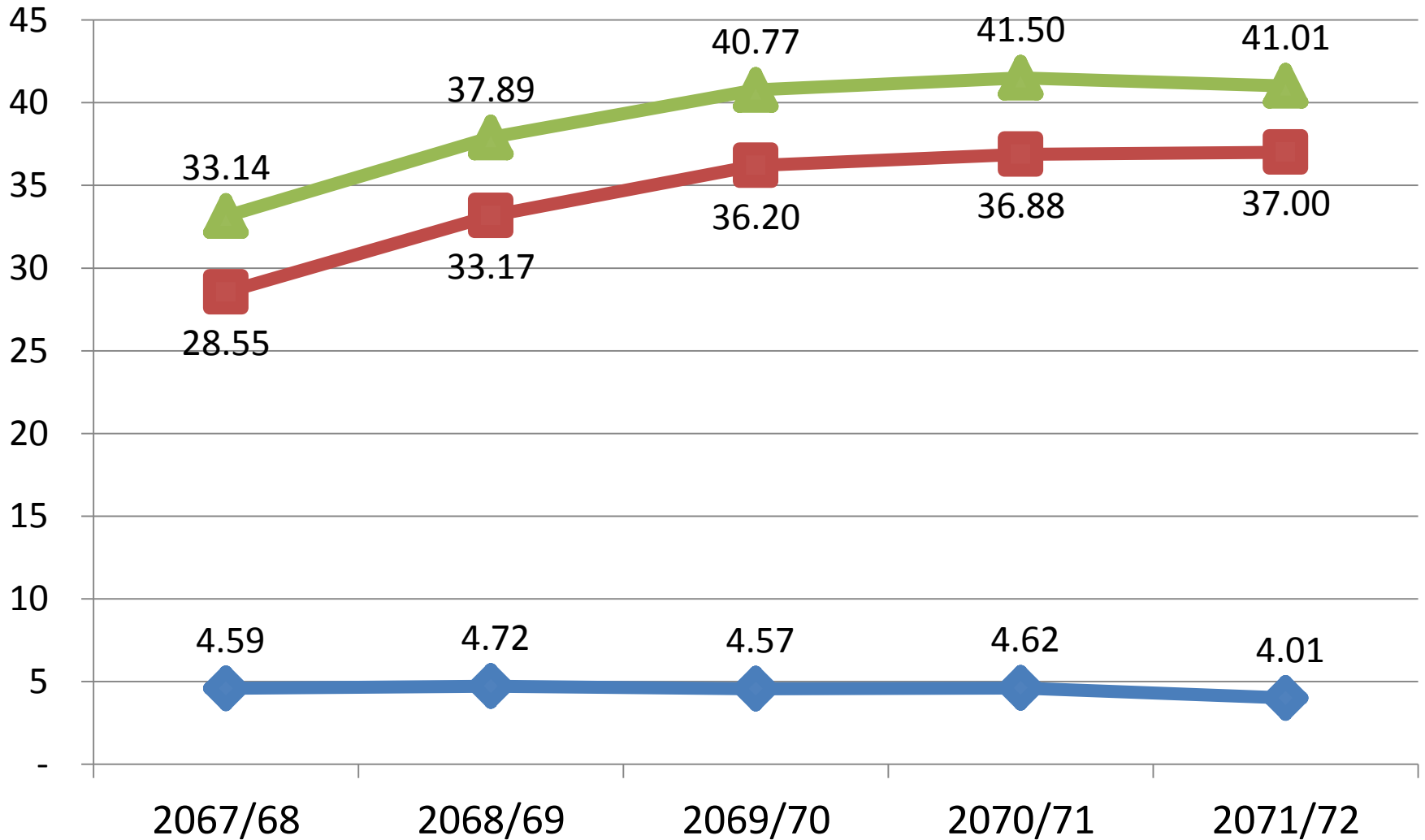


◆ GDP

■ import

▲ export

Merchandise Trade* as % of GDP



◆ Exports of goods (% of GDP) ■ Imports of goods (% of GDP)

▲ Merchandise trade as % of GDP

*includes trade through customs sources only

For Furthur Information

www.customs.gov.np